

# Mack King Pin Socket

## MODEL 40310

# ESCO

**PRO**  
SERIES

**NEW**  
**ARRIVAL!**

Designed to fit the **slotted adjusting screw** in tapered kingpins.



**MODEL 40310**  
**1.8 in. Mack King Pin**  
Specialty Socket

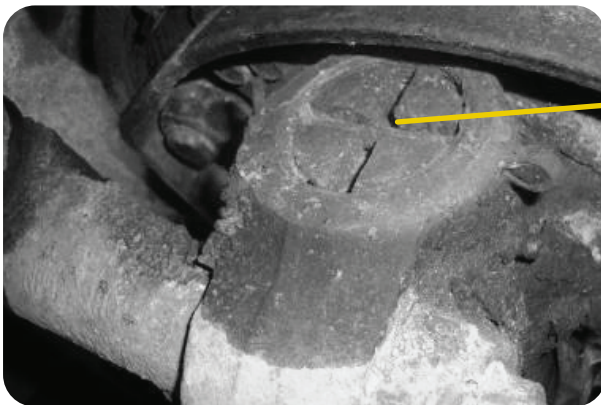
## Specifications:

## MODEL 40310

The **ESCO 1.8 in. Mack King Pin Socket** is designed to get the job done safer and easier, while working on Mack trucks. Manufactured for use with 1/2 in. square drive ratchets and breaker bars. Designed to fit the slotted adjusting screw in tapered kingpins that are most commonly used on most Mack front axles (12,000 to 20,000 lbs.).

## BENEFITS & FEATURES:

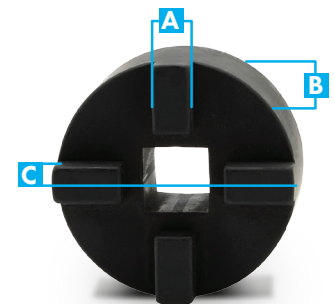
- ▶ Designed to be used on slotted adjusting screw in tapered kingpins.
- ▶ Application: Majority of Mack front axles (12,000 to 20,000 lbs.)
- ▶ Use with 1/2 in. square drive ratchet or breaker bar.
- ▶ A must have socket for any technician(s) working on Mack trucks.



Fits in most Mack truck king pin caps to remove king pin. Designed to fit in the "+" design with precision



Model #	40310
Description	1.8 in. Mack King Pin Socket
Crown Width (A)	0.30 in.   7.6 mm
Socket Diameter (B)	1.87 in.   47.5 mm
Socket Height (flat height) (C)	0.85 in.   21.6 mm
Socket Height (a crowns)	1.1 in.   27.94 mm
Drive Size	1/2 in.
Weight	1 lb.   0.45 kg
UPC	816904024963



NOTE: ESCO reserves the right to change, alter, or modify product(s) without notice. This includes but is not limited to product: color, design, parts, accessories, etc.

sales@esco.net **WWW.ESCO.NET** 1.800.352.9852



COPYRIGHT 2020 • 15270 Flight Path Drive • Brooksville, FL 34604

