



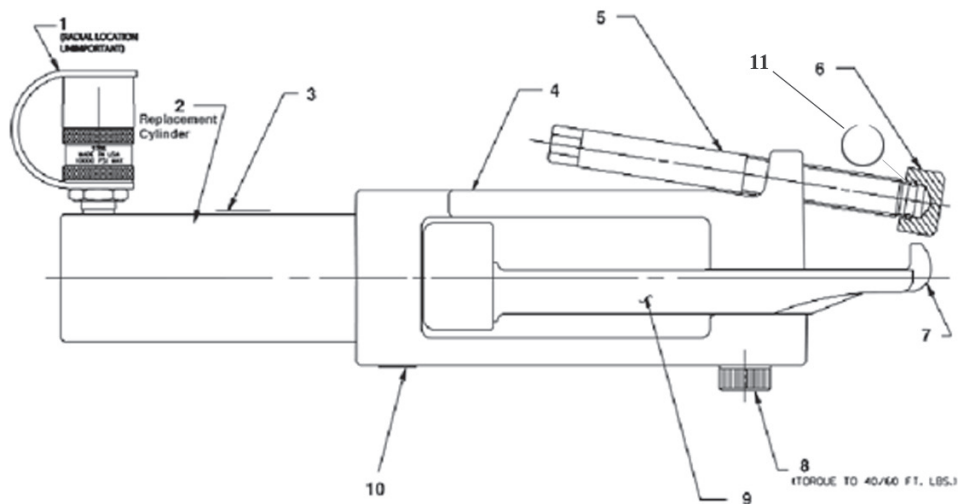
Parts List For

Tire Bead Breaker Model 10100

Rev. 0221

BEAD BREAKER

Max. Capacity: 13.8 Ton at 10,000 PSI



ITEM NO.	PART NO.	NO. REQ'D	DESCRIPTION
1	10606	1	Ram Half Coupler with Dust Cap
2	44857	1	Replacement Cylinder (see page 2)
3	260154	1	Decal
4	58448YE3	1	Frame
5	34184	1	Set Screw
6	28705-K	1	Foot
7	36958	1	Hook
8	22469	1	Shoulder Bolt
9	58449YE3	1	Clevis
10	260095	1	Decal, Warning
11	DA11816049	1	Retaining Ring





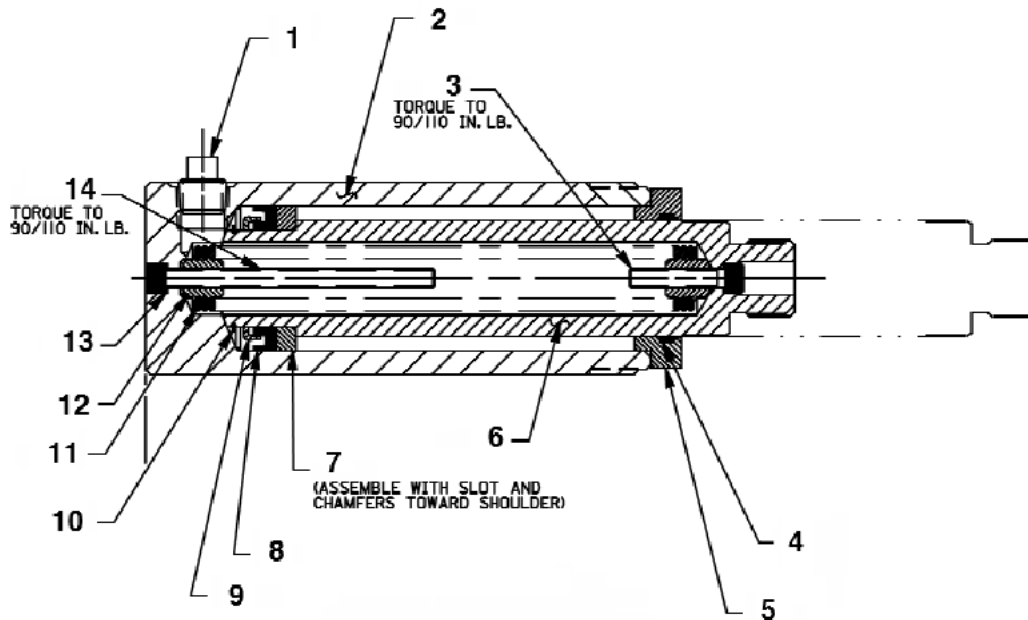
Parts List For

Model 10100 BEAD BREAKER

Max. Capacity: 13.8 Ton At 10,000 PSI

Rev 0221

REPLACEMENT CYLINDER 1825RA



ITEM NO.	PART NO.	NO. REQ'D	DESCRIPTION
1	10606	1	Coupler
2	44857	1	Body, Cylinder
3	10020	1	Soc. Hd. Cap Screw (1/4-20 x 1-1/4)
4	201429	1	Wiper
5	351115	1	Guide, Rod
6	421142	1	Rod, Piston
7	207798	1	Bearing, Piston
8	207796	1	U Cup
9	207797	1	Retainer
10	13654	1	Retainer Clip
11	202625	1	Spring (.83 OD x 5.00 x 13 WS)
12	201360	1	Spring Retainer
13	10442	1	Washer, Copper (.37 x .25)
14	16064	1	Soc. Hd. Cap Screw (1/4-20 x 3-1/2)

Refer to Operating Instructions included with this product for detailed information about operation, testing, disassembly, reassembly, and preventive maintenance.

Items found in this parts list have been carefully tested and selected.