

2 Ton Bladder Jacks

MODEL 92040 & 92041



PRO
SERIES

Great for use
in collision and
body shops!

NEW!



EXTENSIONS
INCLUDED

Benefits & Features:

- Easy Operation - Up & Down Function Simple to Use.
- Designed for constant use in professional and hobbyist environments.
- Small compact design - Great for Shops, Hobbyist, or service vehicles.
- Popular choice for collision repair shops for use with frame machines.
- Ideal for use in brake, suspension, tire/wheel and many other applications.
- 100% Air up and Air Down.
- Built in Stabilization Cylinder.
- Low Profile Bladder Jack - Minimum Height of 4.5 in. (92040).
Available in 2 & 3 Stage Styles
(More Details on Back)

**PRODUCT
VIDEO
COMING
SOON!**

Specifications:

MODEL 92040 & 92041

ESCO

We Keep
Your Equipment
MOVING



These completely pneumatic jacks are a great addition to any service shop, hobbyist, or mobile service technician who deals in automotive/SUV/Light Truck applications. Outfitted with an internal cylinder system that ensures stability and solid positioning, the ESCO Pro Series Bladder Jacks are a safe and fast solution for any lifting applications in any conditions. For added safety, the ESCO Bladder Jacks also feature a dual safety valve that prevents both over-inflation and uncontrolled descend (deflation) of the jack(s) under load. These ESCO Bladder Jacks can also be used for repair projects in body shop, as an additional support on frame machines to lift in small increments as needed or for lifting heavy items with precision.

The ESCO Pro Series Bladder Jacks provide up to 4,000 lbs. (2 Tons) of lifting capacity and 100% air operated, with a working air pressure of 100-145 psi. Both Jacks have optional lifting extensions of 3 in. and 2.25 in. The two and three bag bladder designs, have low profile starting points ranging from 4.5-7.9 in. and Maximum Lifting Heights from 17-22 in. (including extension). The ESCO Pro Series Bladder Jack(s) are built to the same quality standards of all ESCO lifting and support equipment and come with a 1-Year Warranty.

Model # Description	92040 2-Stage	92041 3-Stage
Capacity	2 Ton (4,000 lbs.)	2 Ton (4,000 lbs.)
Working Air Pressure	100-145 PSI	100-145 PSI
A (Min. Height)	4.5 in. (115mm)	7.9 in. (200mm)
A+B+C (Max. Height)	17 in. (430mm)	22 in. (560mm)
B (Extended Height)	9.25 in. (235mm)	11.8 in. (300mm)
C (Extension Height)	3 in. (80mm)*	2.25 in. (60mm)**
D (Width)	10.4 in. (265mm)	9.8 in. (250mm)

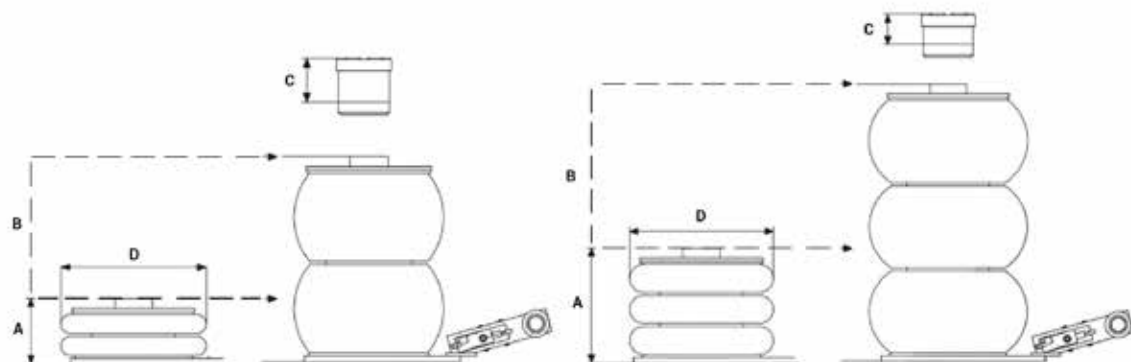
* Included with 92040

** Included with 92041

3 in. Extension



2.25 in. Extension



NOTE: ESCO reserves the right to change, alter, or modify product(s) without notice. This includes but is not limited to product: color, design, parts, accessories, etc.

sales@esco.net **WWW.ESCO.NET** 1.800.352.9852



COPYRIGHT 2017 • 15270 Flight Path Drive • Brooksville, FL 34604

