



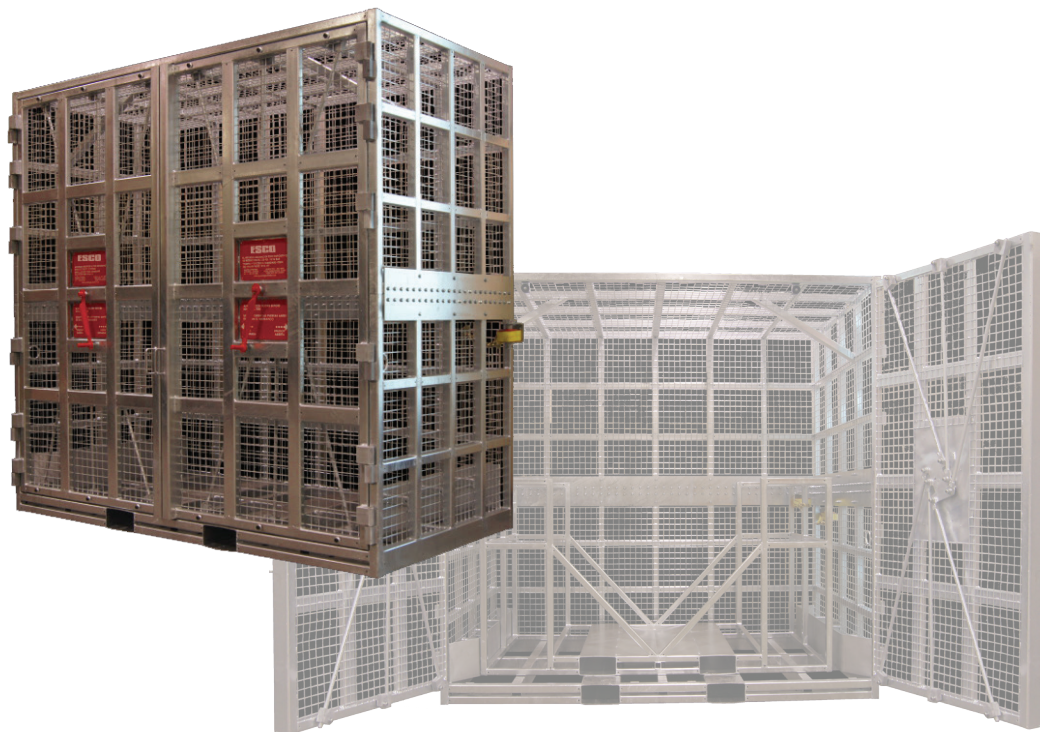
Equipment Supply Company



Instruction Manual

AUTOMATIC OTR & MINING TIRE INFLATION CAGE

ESCO #90425



WARNING:

THIS PRODUCT, AS WELL AS ALL TIRE TOOLS, SHOULD NEVER BE USED BY PERSONS UNLESS THEY HAVE BEEN TRAINED PROPERLY ACCORDING TO OSHA REGULATIONS 29CFR 1910.177 ENTITLED "SERVICING SINGLE-PIECE & MULTIPIECE RIM WHEELS".

FOR THE SAFE USE OF THIS PRODUCT, PLEASE READ INSTRUCTIONS. FAILURE TO DO SO CAN LEAD TO A VOID IN WARRANTY OR SERIOUS INJURY. PLEASE USE THIS TOOL AND OTHER TIRE SERVICE TOOLS WITH THE UPMOST SAFETY PRECAUTIONS.

CAUTION

Before using the product, carefully read the instructions manual and all stickers and warnings noted on the product. This is necessary to avoid injury to the operator and damage to the product.

Product Description

The ESCO Model #90425 is the largest tire safety inflation cage built in the world. Able to handle tire diameters up to 115" *2921mm*, mining tires from 24.00R49 through 45/65R/45 and even 30.00R51. Equipped on both of this products doors is a safety system that activates or deactivates the inflation of the tire. In order to inflate, you must close both (2) doors.

PRODUCT WARRANTY:

The MODEL 90425 inflation cage includes a 1-year warranty from the billing date, but is null and void if the cage has been damaged through misuse, faulty installation, improper maintenance or accidental damage, or unauthorized modifications or repairs. The cage is considered as unusable and dangerous after a tire exploded in it.

PRODUCT SPECIFICATIONS:

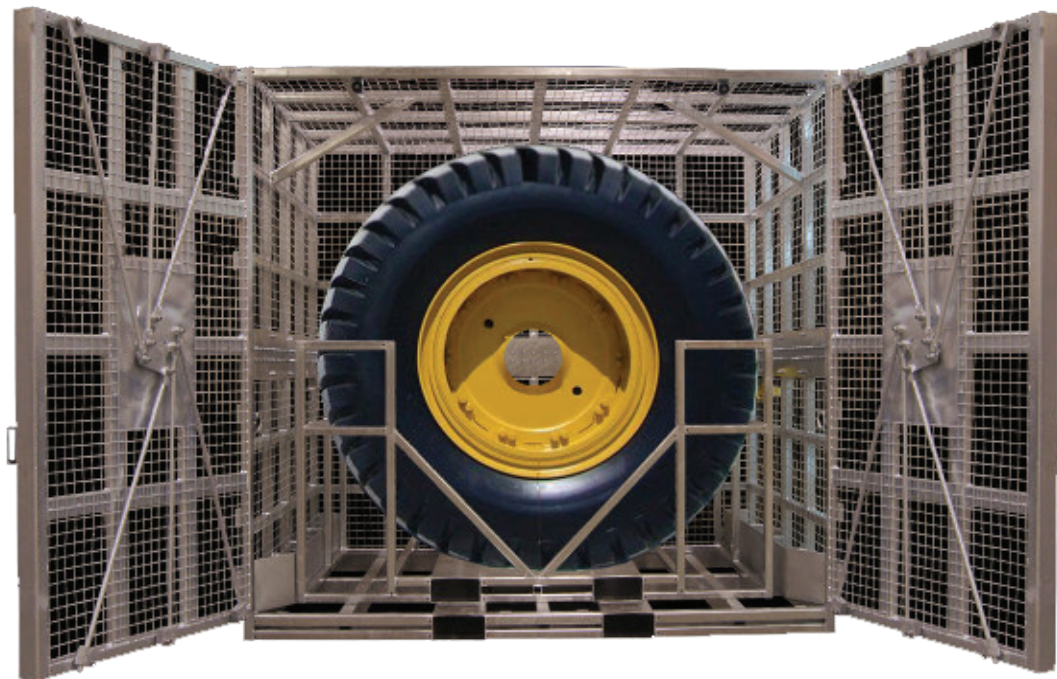
Includes: Air hose and a power cable (110 Volt)

Max. Inflation: 130 PSI | *8.96bar*

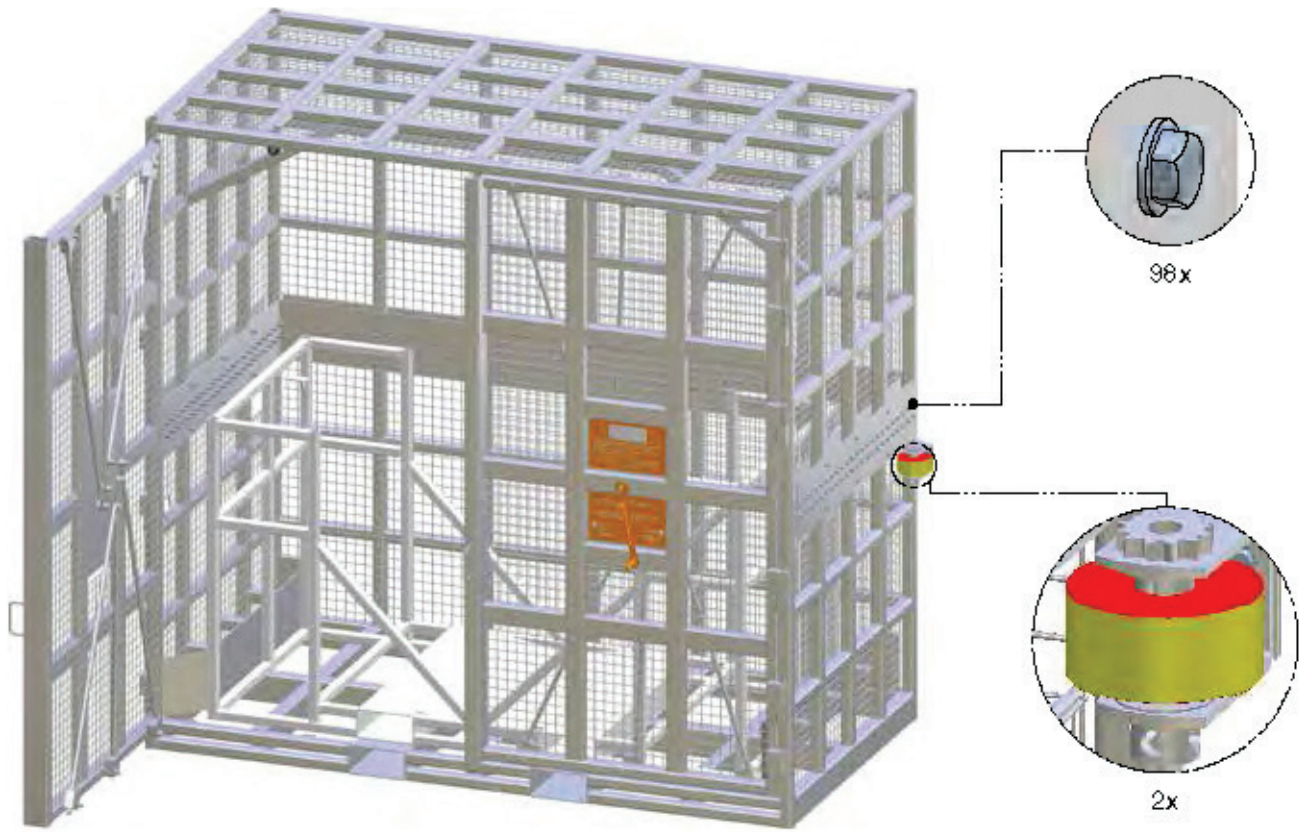
Dimensions (L x W x H): 136" x 72" x 130" | *3454mm x 1829mm x 3302mm*

Max. Tire Size: 115" OD x 48" W | *3000mm OD x 1219mm W*

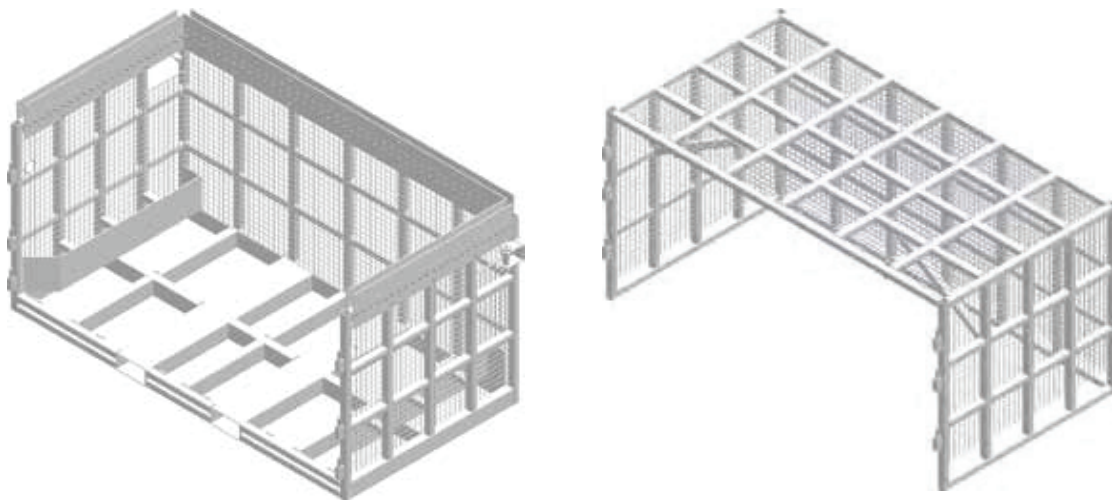
Weight: 8998 lbs. | *4090 kg*



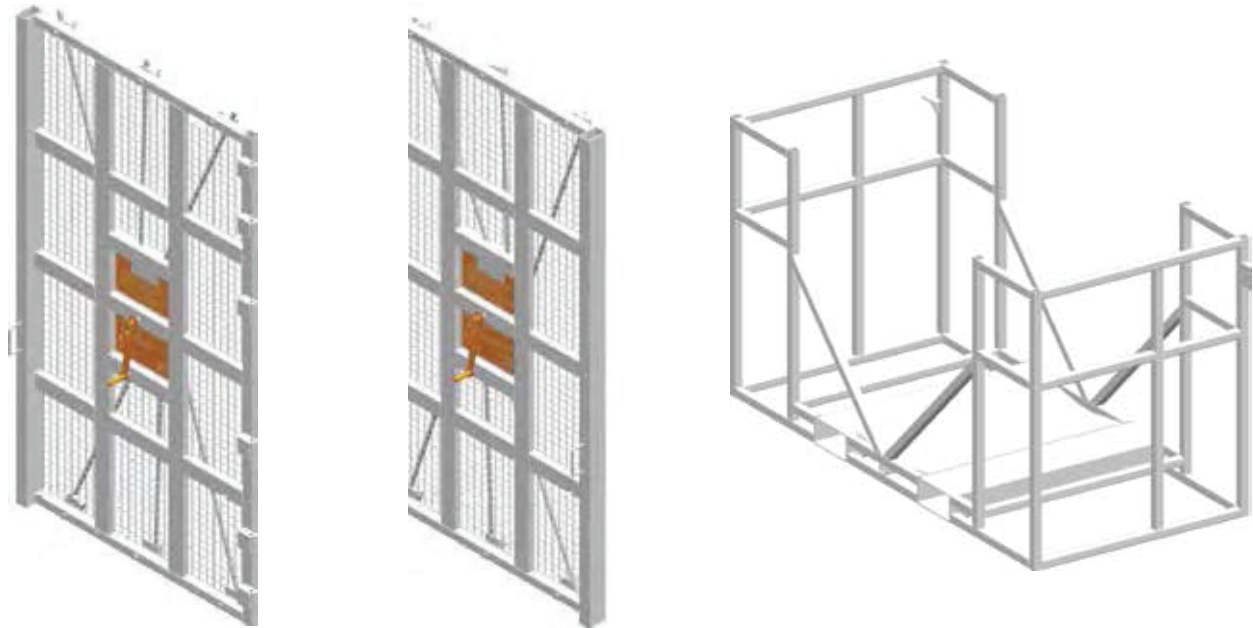
ASSEMBLY



PARTS



PARTS CONT.



HARDWARE



HEXAGONAL BOLT 1/2-13UNC
x 4-1/2" GR5 ZINC

QTY:98



LOCK-NUT 1/2-13UNC

QTY: 98



SAE WASHER 1/2"

QTY: 196



BELT 3" x 30' WITH CHAIN AND
HOOK

QTY : 2

ASSEMBLY STEPS



ASSEMBLY STEPS CONT.

4

Align the holes and insert the bolts (for all 98 holes).



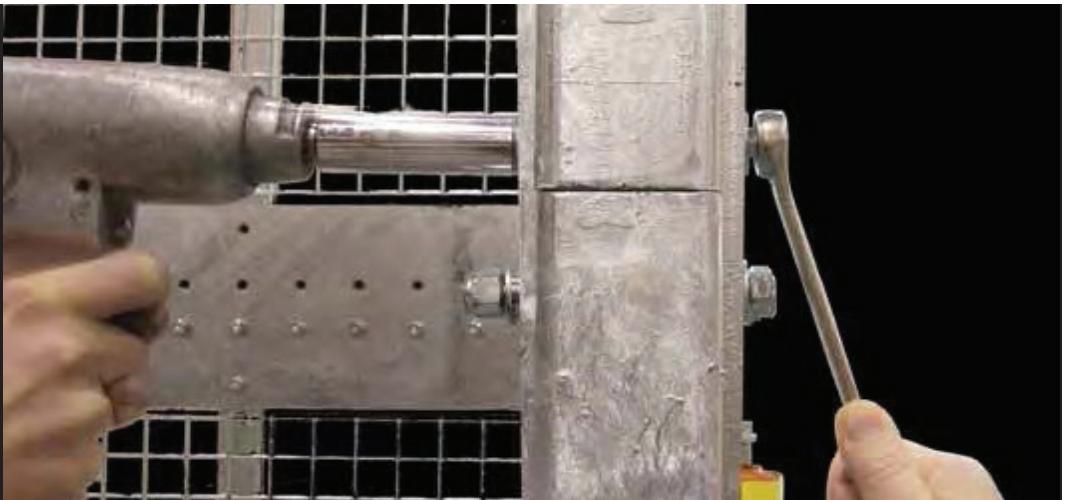
5

Screw slightly the lock-nuts onto the bolts.



6

Align the holes and insert the bolts (for all 98 holes).



ASSEMBLY STEPS CONT.**7**

Hang the door
with slings.

**8**

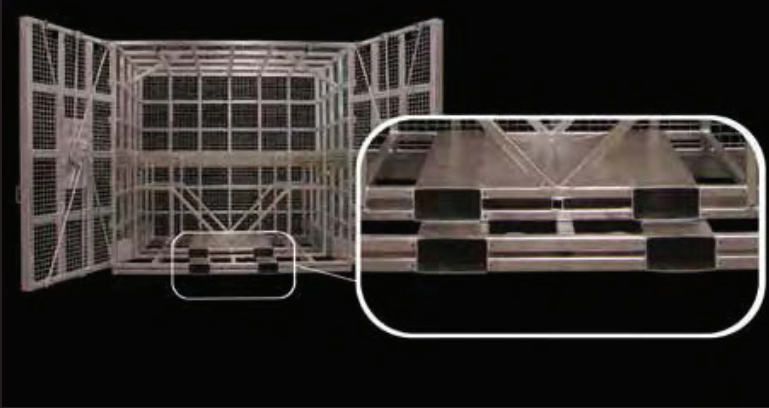
Install the space washer
on the axis of the hinges.

**9****10**

Grease the hinges if necessary.



USING THE INFLATION CAGE



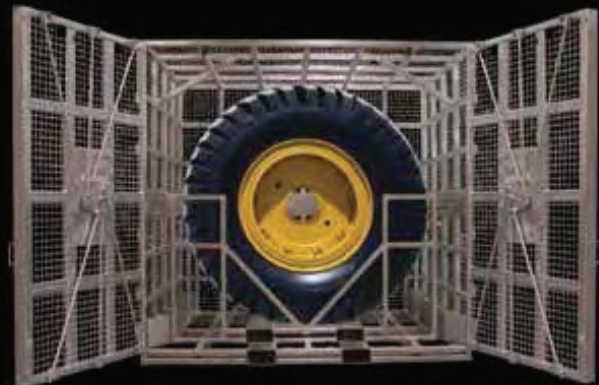
Your inflation cage should be placed on the ground; it should not be attached to the ground in any way. The cage must be installed on a flat surface. You can use a forklift to facilitate handling but only by using the fork guides as shown on the photo.

1

The tire inflation cage can be used with or without the tire basket (see photo). If you have a tire handler you do not need to use the tire basket and the tire can be placed directly in the inflation cage. Otherwise the tire must be placed in the basket and handled with a fork truck.

**2**

Place the tire in the cage or in the basket.



USING THE INFLATION CAGE

3

Support the tire while you secure it with the strap and hook.



A



B



4

Insert your air hose in the air hose entry on the side of the cage.



5

Close the doors and make sure that the rods of the latches are behind the frame of the cage.



6

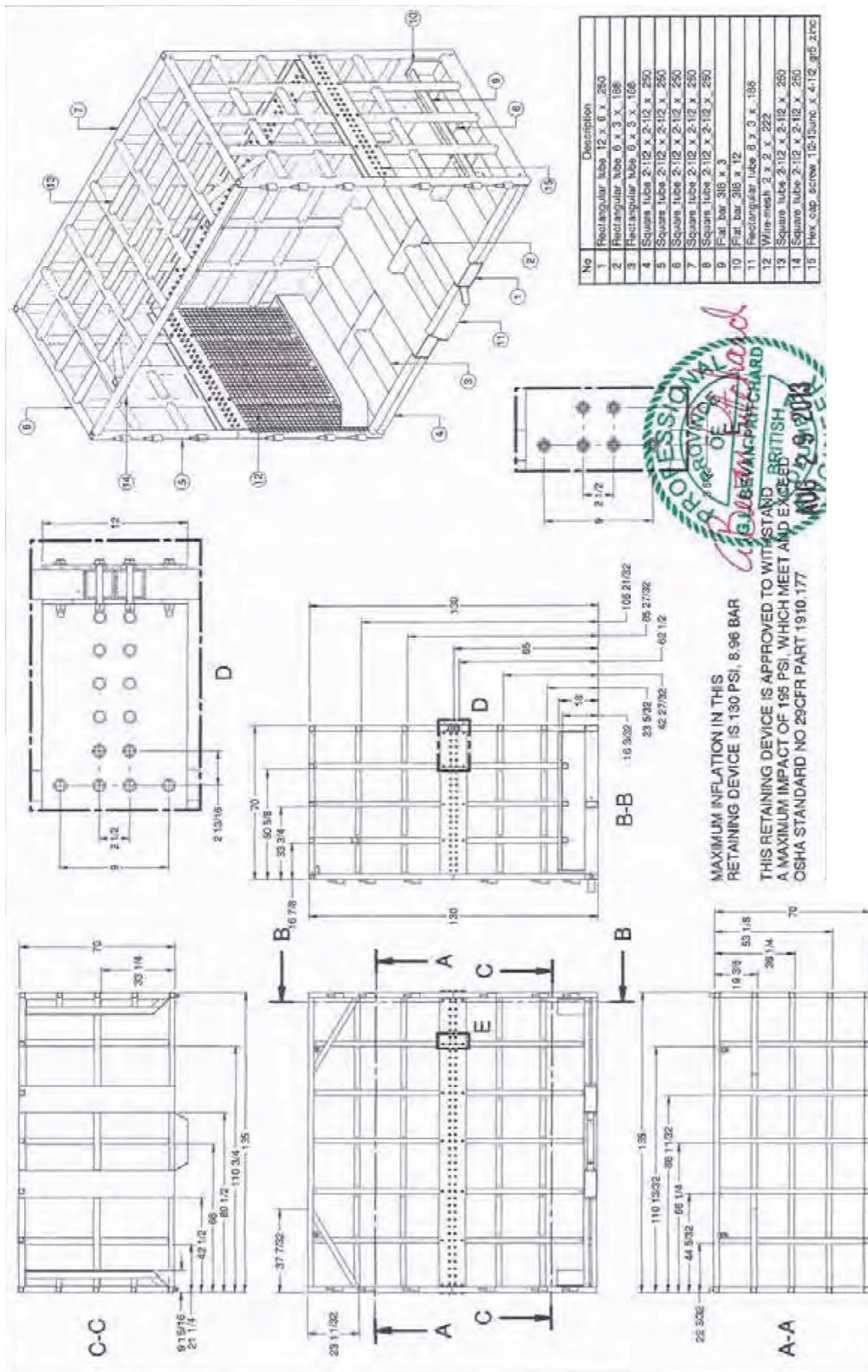
Inflate your tire.

*Inflating a tire is a dangerous operation and no one should be close to the cage, it is important to keep a safe distance while the tire is being inflated.

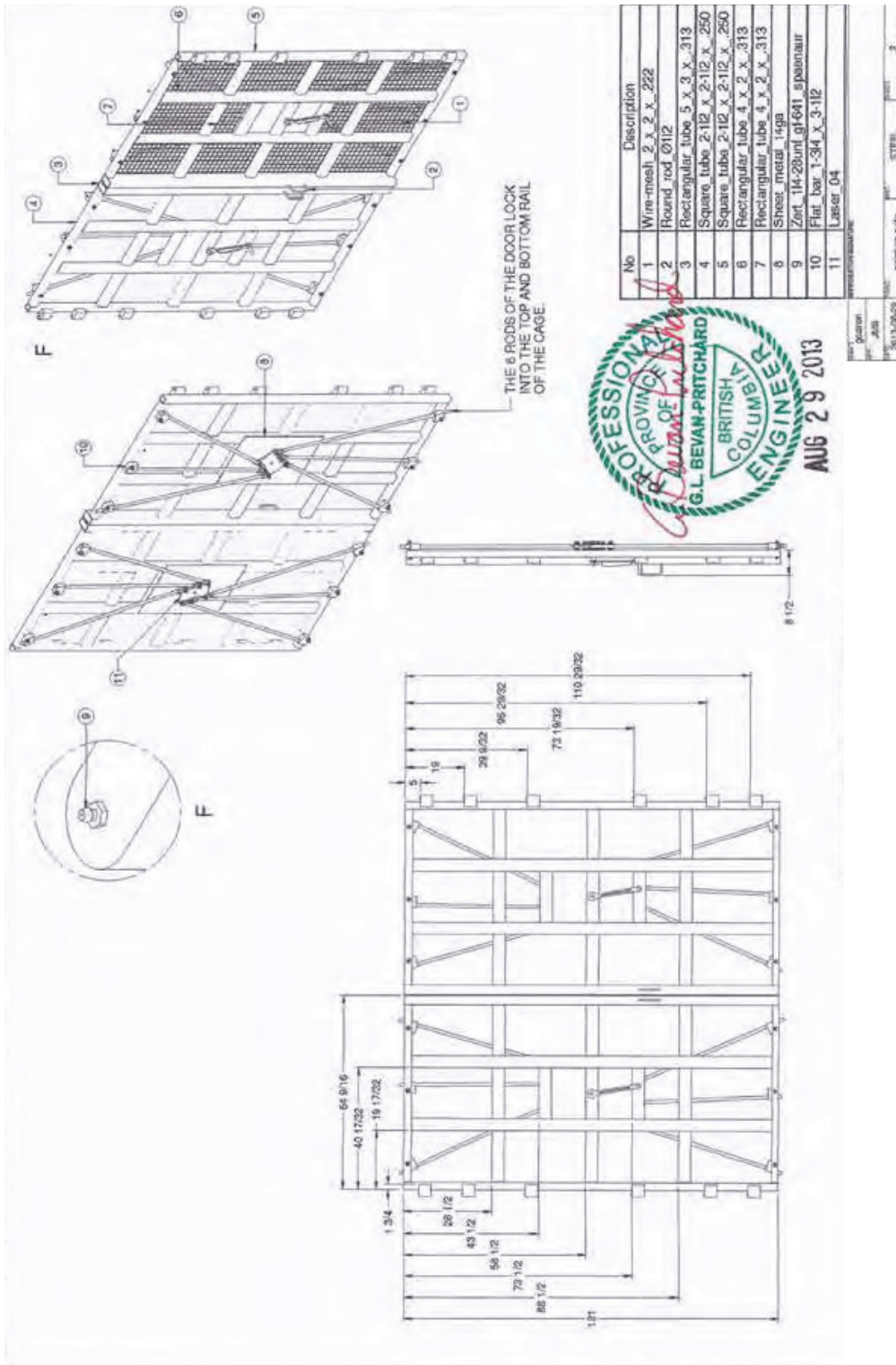
7

Remove the tire from the cage.

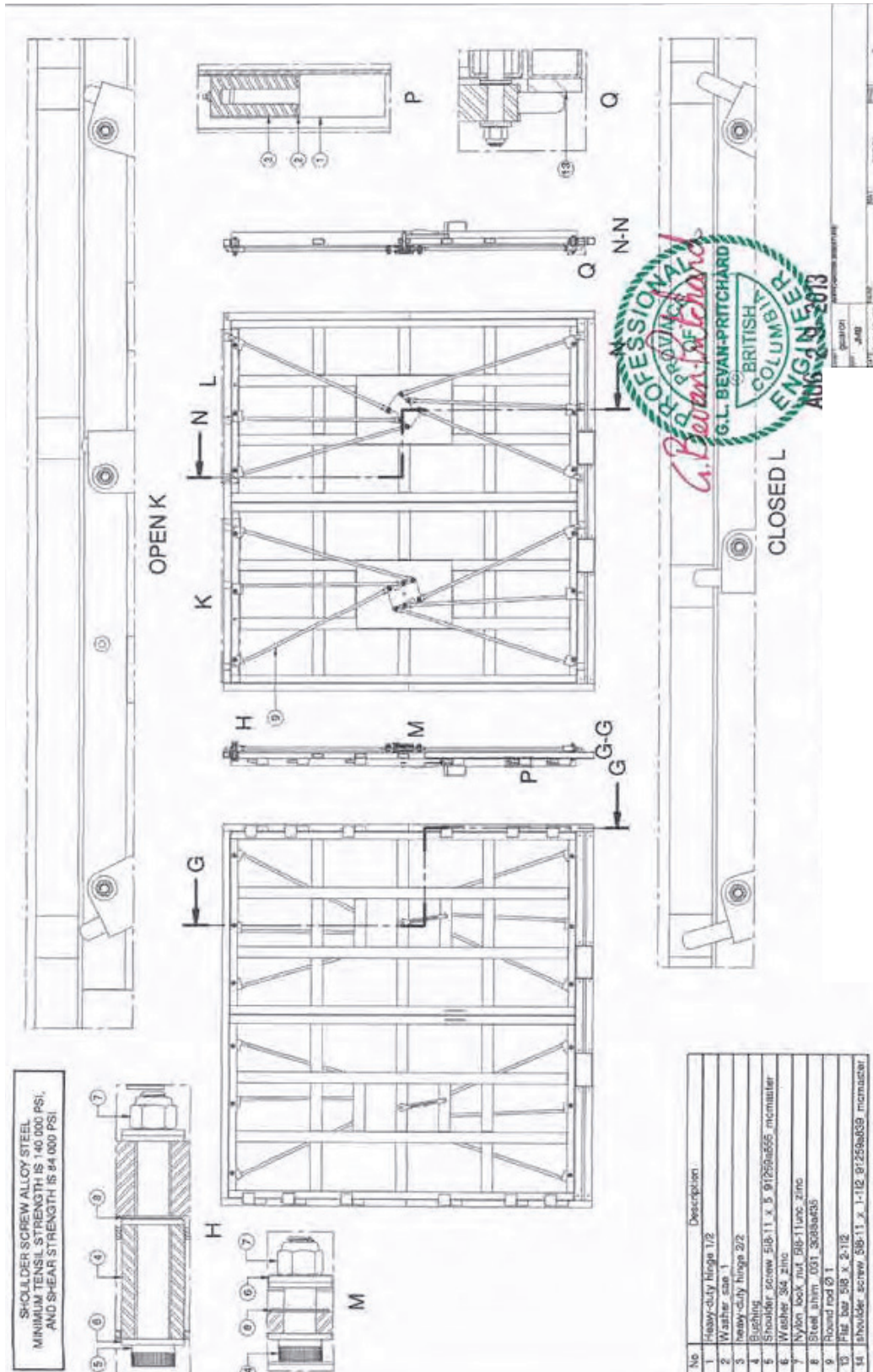
CERTIFICATIONS FOR MODEL 90425



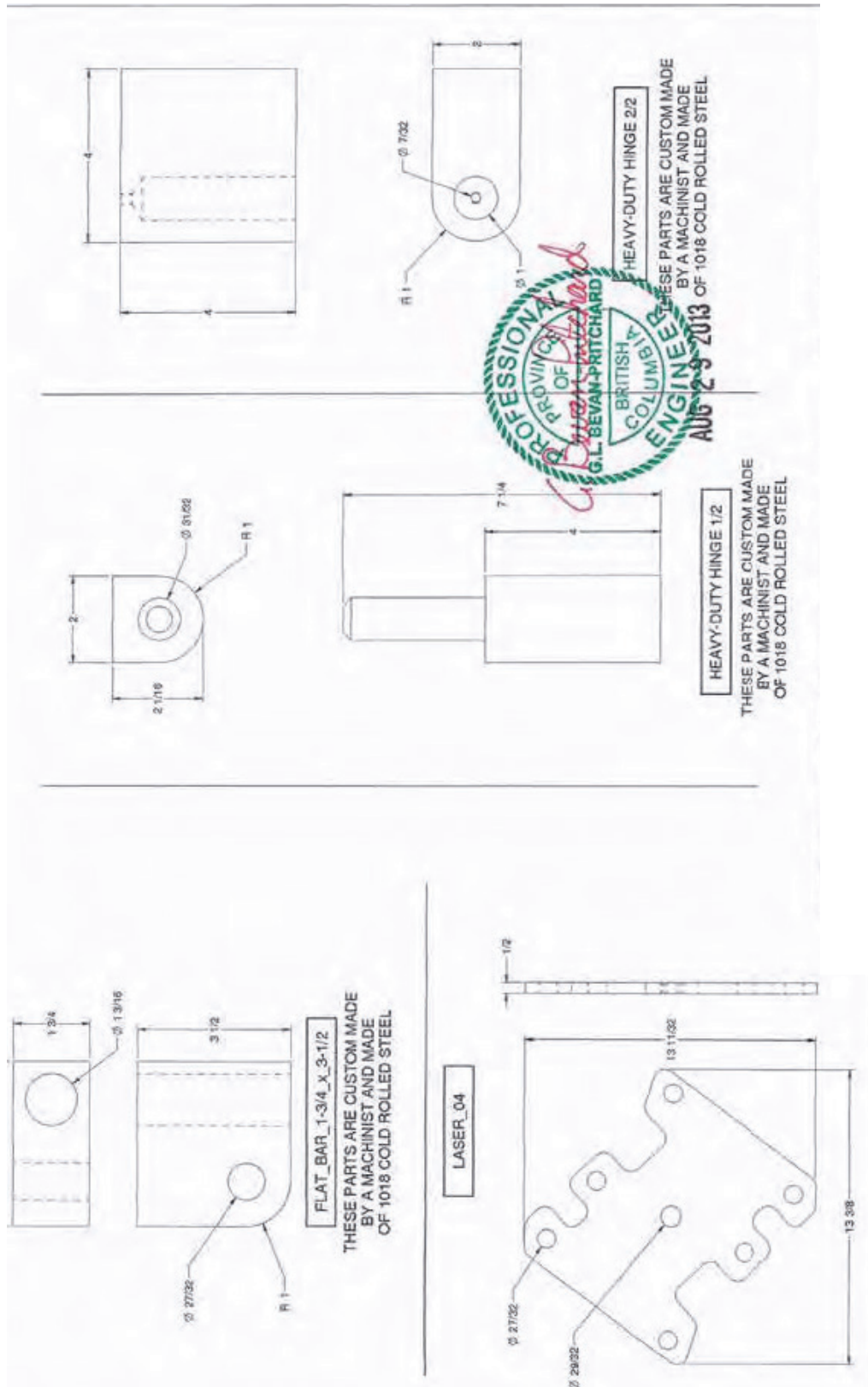
CERTIFICATIONS FOR MODEL 90425



CERTIFICATIONS FOR MODEL 90425



CERTIFICATIONS FOR MODEL 90425





We Keep
Your Equipment
MOVING

CONTACT INFO:

www.esco.net - info@esco.net
15270 Flight Path Drive
Brooksville, FL 34604
PH. 352.754.1117
Toll Free. 1.800.352.9852 (US, Canada Only)
Fax: 352.754.4508



Scan this Code to Go to
the ESCO website

WWW.ESCO.NET

Stay Connected with ESCO...

