

**YELLOW  
JACKET** By



# Instruction Manual

**10885**

Forklift Jack

15270 Flight Path Drive • Brooksville, FL 34604

[www.esco.net](http://www.esco.net) • [sales@esco.net](mailto:sales@esco.net)

Phone (352) 754-1117 • Toll Free (800) 352-9852 US, Canada & Caribbean ONLY • Fax (352) 754-4508

## **Specifications**

Scissors Capacity	4 Tons
Post Capacity	5 Tons
Minimum-Maximum Scissors Height	2.5" to 16.7"
Minimum-Maximum Post Height	16.4" to 28.5"
Overall Size (L×W×H)	27.1" x 8.3" x 16.1"
Net Weight (approx.)	45kgs

## **Safety Instructions**

1. Read and understand the instruction manual before use.
2. This is a lifting device only. Do not move or dolly the vehicle on the jack. The load shall be supported immediately by other appropriate means.
3. Do not overload. Overload can cause damage to failure of the jack.
4. This jack should be used on hard level surfaces capable of sustaining the load.
5. Do not get under vehicle while jack is being used as the only support.
6. Failure to comply with these warnings may result in loss of load, damage to jack and/or failure resulting in personal injury or property damage.

## **Assembly**

**Note: For parts identification, please refer to parts breakdown**

15270 Flight Path Drive • Brooksville, FL 34604

[www.esco.net](http://www.esco.net) • [sales@esco.net](mailto:sales@esco.net)

Phone (352) 754-1117 • Toll Free (800) 352-9852 US, Canada & Caribbean ONLY • Fax (352) 754-4508

**listed on page 3-5.**

Make sure handle engages the linkage (56) .Insert handle (24) into handle socket (34), Tighten socket head cap screw (26) to fix the handle firmly.)

**Lubrication**

1. Linkage-- use #2 tube grease where linkage (56) inserts into the handle.
2. Grease Fittings--- inject #2 tube grease into two grease fittings (16).
3. Lubricate pivoting and moving parts with 30W oil.

**Raising the jack**

1. Turn handle clockwise, until resistance is felt. Do not over tighten.
2. Place jack directly under object be lifted. Check poisoning under slight load to confirm jack or load will not slip, and is properly centered under load.
3. Raise jack by pumping handle until desired height reached. After lifting, secure load by appropriate means. Do not use jack as the only means of support.

**Lowering the jack**

1. Slowly turn handle counter-clockwise. Speed of descent is controlled by how much the release valve is turned. Always lower the load slowly and with caution.
2. Always store jack in the fully lowered position.

15270 Flight Path Drive • Brooksville, FL 34604

[www.esco.net](http://www.esco.net) • [sales@esco.net](mailto:sales@esco.net)

Phone (352) 754-1117 • Toll Free (800) 352-9852 US, Canada & Caribbean ONLY • Fax (352) 754-4508

**Trouble shooting**

If jack fails to rise to its limit, or performs poorly remove Screw(42), and inspect hydraulic oil level. Fill with high quality hydraulic jack oil to the plug level. Replace oil fill plug and test jack without a load for proper function and operation several times.

Sometimes during shipment and handling, air may go into the hydraulic system, causing poor lifting performance. Before initial operation, purge any air from the system by fully opening pump release valve (turn handle counter-clockwise). Pump handle rapidly several times and close pump release valve, if jack does not lift properly, repeat air purging process.

**Parts list**

<b>Item No.</b>	<b>Description</b>	<b>Size</b>	<b>Quantity</b>
1	Nut	M16	2
2	Washer	φ16	2
3	Shaft Axle	φ30×180	1
4	Screw	M8×15	2
5	Washer	φ8	2
6	Plates	φ44×3	2
7	Side Plates	533×138×17	2
8	Snap Ring	φ18	2
9	Washer	φ20×1	2
10	Front Wheel	φ52×30	2
11	Nut	M20×1.5	2

15270 Flight Path Drive • Brooksville, FL 34604

[www.esco.net](http://www.esco.net) • [sales@esco.net](mailto:sales@esco.net)

Phone (352) 754-1117 • Toll Free (800) 352-9852 US, Canada & Caribbean ONLY • Fax (352) 754-4508

ESCO EQUIPMENT SUPPLY COMPANY

12	Axle	φ24×212	1
13	Snap Ring	φ20	2
14	Washer	φ20×1	2
15	Rear Wheel	φ78×42	2
16	Crease Fitting	M8×1	2
17	Screw	M18×38	2
18	Screw	M8×20	1
19	Nut	M8	2
20	Spacer	φ35×20	2
21	Lifting Arm Assembly	583×193×104	1
22	Handle Grip	φ38×96	1
23	Handle	φ32×486	1
24	Handle	φ32×472	1
25	Screw	M6×35	1
26	Screw	M12×22	1
30	Snap Ring	φ16	2
31	Axle	φ16×104	1
32	Retaining Spring	104×32×42	1
33	Pin	φ12×37	1
34	Socket	174×96×100	1
36	Screw	M6×15	1
37	Screw	M8×10	2
38	Ball	φ5	2
39	Cylinder Nut	φ90×60	1
40	O-Ring	47.5×2.65	2

15270 Flight Path Drive • Brooksville, FL 34604

[www.esco.net](http://www.esco.net) • [sales@esco.net](mailto:sales@esco.net)

Phone (352) 754-1117 • Toll Free (800) 352-9852 US, Canada & Caribbean ONLY • Fax (352) 754-4508

ESCO EQUIPMENT SUPPLY COMPANY

41	O-Ring	75×2.65	2
42	Screw	M10×1	1
43	Reservoir	195×122×44	1
44	Bushing	φ42×13	1
45	Piston Rod	φ38×370	1
46	Cylinder	φ52×244	1
47	Spacer	φ47×20	1
48	Filter	φ8×9	1
49	Magnet Steel	φ6×6	1
50	Valve Block	155×146×95	1
51	O-Ring	37.5×3.55	2
52	Nylon Washer	φ44×1.5	1
54	Ball	φ6	2
55	Square-Type Ring	8.8×4.4×6	1
56	Linking Axle	215×22×22	1
57	Ball	φ4	1
58	Seat	φ7.2×9	1
59	Spring	φ7.5×19.7	1
60	O-Ring	7.5×2.65	1
61	Screw	M12×21	1
62	Ball	φ9	1
63	Gasket	φ12	1
64	Screw	M12×20	1
65	Gasket	φ28.3×1.5	1
66	Screw	M10×13	1

15270 Flight Path Drive • Brooksville, FL 34604

[www.esco.net](http://www.esco.net) • [sales@esco.net](mailto:sales@esco.net)

Phone (352) 754-1117 • Toll Free (800) 352-9852 US, Canada & Caribbean ONLY • Fax (352) 754-4508

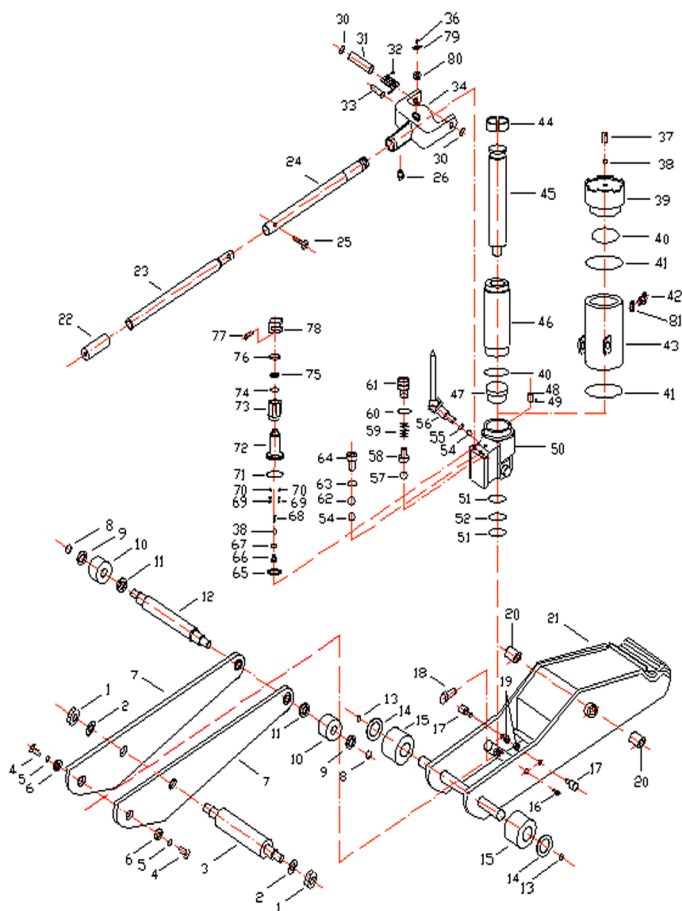
ESCO EQUIPMENT SUPPLY COMPANY

67	O-Ring	φ6.9×1.8	1
68	Spring	φ8×20.7	1
69	Spring	φ4×8	2
70	Ball	φ3	2
71	O-Ring	18.8×2	1
72	Plunger	φ22×87	1
73	Pump	φ35×76	1
74	O-Ring	14×2.65	1
75	Back-Up Ring	φ14×1.25	1
76	Wiper	φ21×6	1
77	Pin	φ2×15	1
78	Guide	28×16×25	1
79	Positioner	48×25×16	1
80	Nut	M6	1
81	Plug	φ15×3	1

15270 Flight Path Drive • Brooksville, FL 34604

[www.esco.net](http://www.esco.net) • [sales@esco.net](mailto:sales@esco.net)

Phone (352) 754-1117 • Toll Free (800) 352-9852 US, Canada & Caribbean ONLY • Fax (352) 754-4508



15270 Flight Path Drive • Brooksville, FL 34604

[www.esco.net](http://www.esco.net) • [sales@esco.net](mailto:sales@esco.net)

Phone (352) 754-1117 • Toll Free (800) 352-9852 US, Canada & Caribbean ONLY • Fax (352) 754-4508